

neptune  
COATINGS  
A member of The Harco Group



# FLUID APPLIED MEMBRANE SYSTEM

Developed and Manufactured by Neptune Coatings Corporation

*Disruptive Waterproofing Solutions*

[www.neptunecoatings.com](http://www.neptunecoatings.com)

SP V20 0319



## About Us

Founded in Northern California in 2000

Acquired by The Harco Group (Belgium) in Q1 2013

Inventors of the WetSuit® Patented System

“Fluid Applied Membrane and Specialty Spray Equipment”

US patents 8919278, 8940382 & 10207289

Continuously innovating through R&D on Products, Applications and Delivery Systems

Addressing markets and verticals through unique coating solutions

# WHAT IS WETSUIT<sup>®</sup>?

WetSuit<sup>®</sup> is a family of cold fluid-applied coatings, creating a seamless and self-flashing membrane, monolithic, extremely durable, suitable for roofing, waterproofing and specialty applications. WetSuit<sup>®</sup> is applied to horizontal, vertical and blindside surfaces with superior adhesion, providing up to 20 year warranty

*Disruptive Waterproofing Solutions*

[www.neptunecoatings.com](http://www.neptunecoatings.com)

SP V20 0319



In February 2017 Neptune Coatings was selected amongst 100+ companies as being the most "*Disruptive Waterproofing Technology*".  
Broadcasted by Manufacturing Marvels/FOX Business channel in April 2017.

[Manufacturing Marvels Featured Presentation](#)



# NEPTUNE COATINGS PRODUCT RANGE



*Disruptive Waterproofing Solutions*

[www.neptunecoatings.com](http://www.neptunecoatings.com)

SP V20 0319



## WetSuit<sup>®</sup> 2-Part

cold spray fluid-applied,  
waterproofing membrane, instant set,  
seamless, Zero VOC



# WetSuit<sup>®</sup> 1-Part

single component, self leveling,  
can be sprayed, brushed or rolled



# WetSuit<sup>®</sup> Undercover

single component, self-leveling,  
pre-strip joints or detail transitions





# WetSuit<sup>®</sup> Trowel

high viscosity coating, ideal for patching  
cracks, voids, ducting, flashing and  
penetrations



# WetSuit<sup>®</sup> Fiber Trowel

reinforced with fiberglass strands,  
cures into a high tensile patch



# WetSuit<sup>®</sup> PrimeMate

quick curing water-based primer  
compatible with various substrates



# WetSuit<sup>®</sup> PrimeMate ER

EPDM rinser/primer



## ***HARSEAL 90***

100% solid silicone-urethane  
Sealant 90 degree liquid cant  
Moisture cured



# Reflex BC

bleed blocking basecoat



## Reflex HPW

high performance water-based elastomeric  
roof coating, high elongation, high tensile,  
sprayed, rolled or brush applied (title 24 compliant)



# HarcoSil

liquid applied, elastomeric roof coating  
silicone-based, pond-resistant coating,  
sprayed, rolled or brush applied





# HARCOAT CIC-1000

seamless spray or roll applied  
thermal insulation coating



# Invisilink<sup>®</sup>

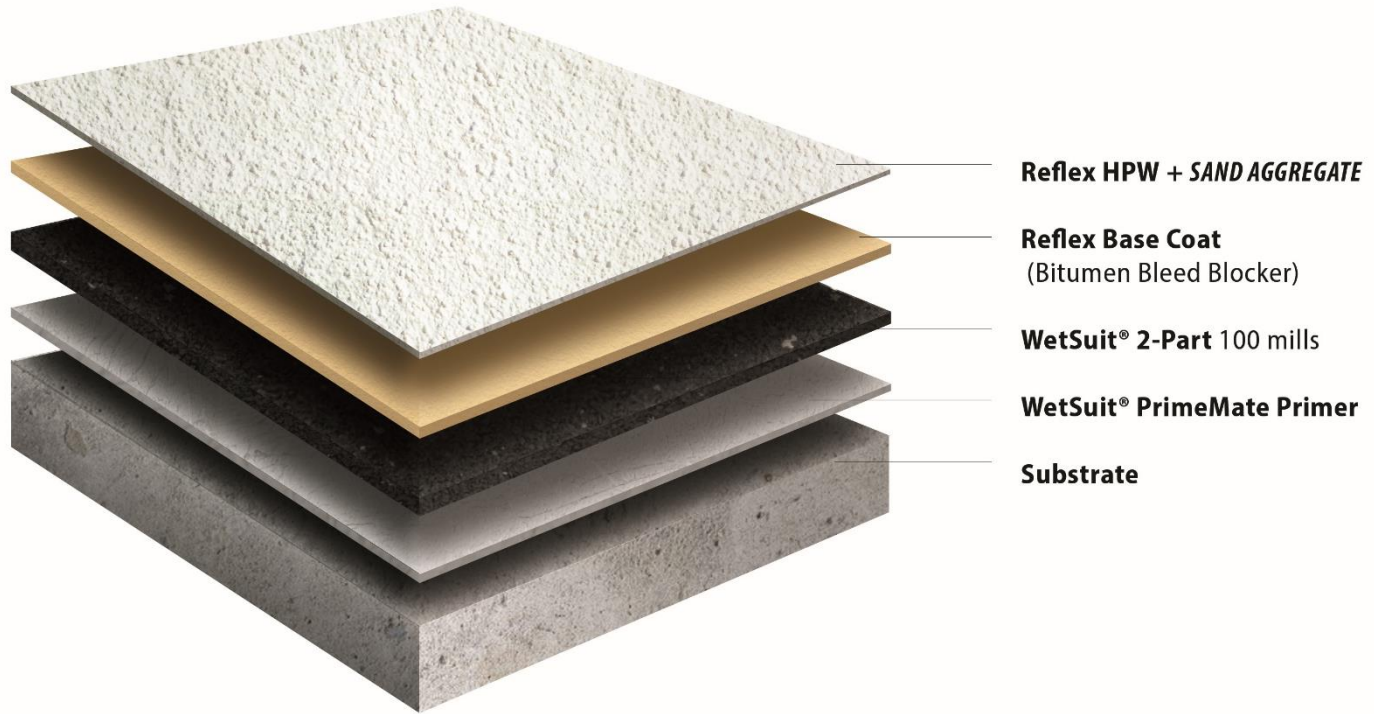
tear-resistant seam fabric  
used for detailing

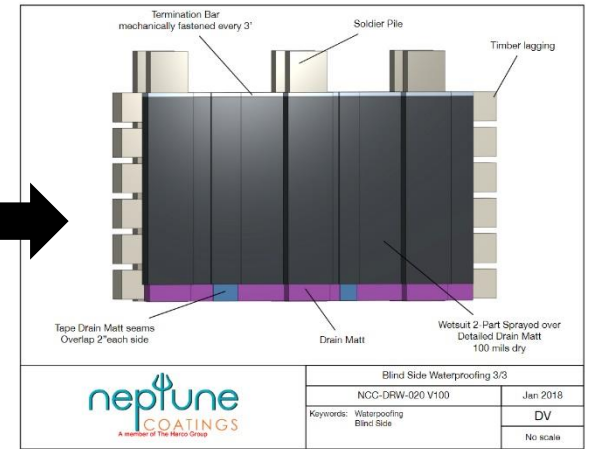
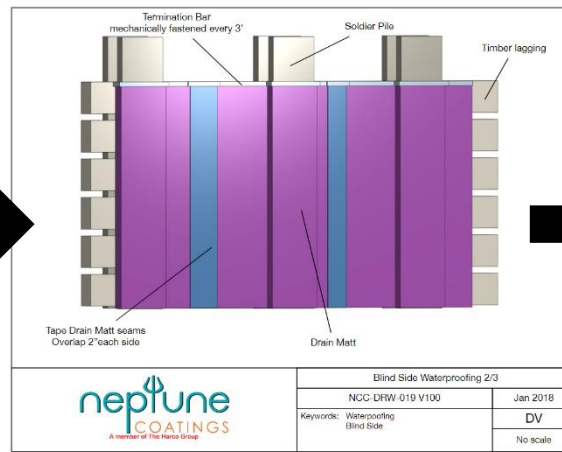
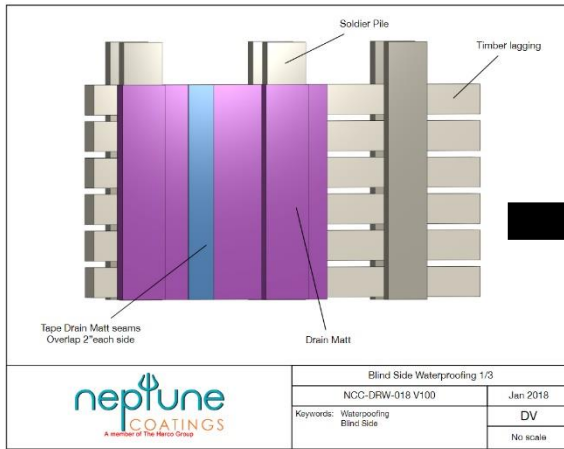
# MARKET SEGMENTS

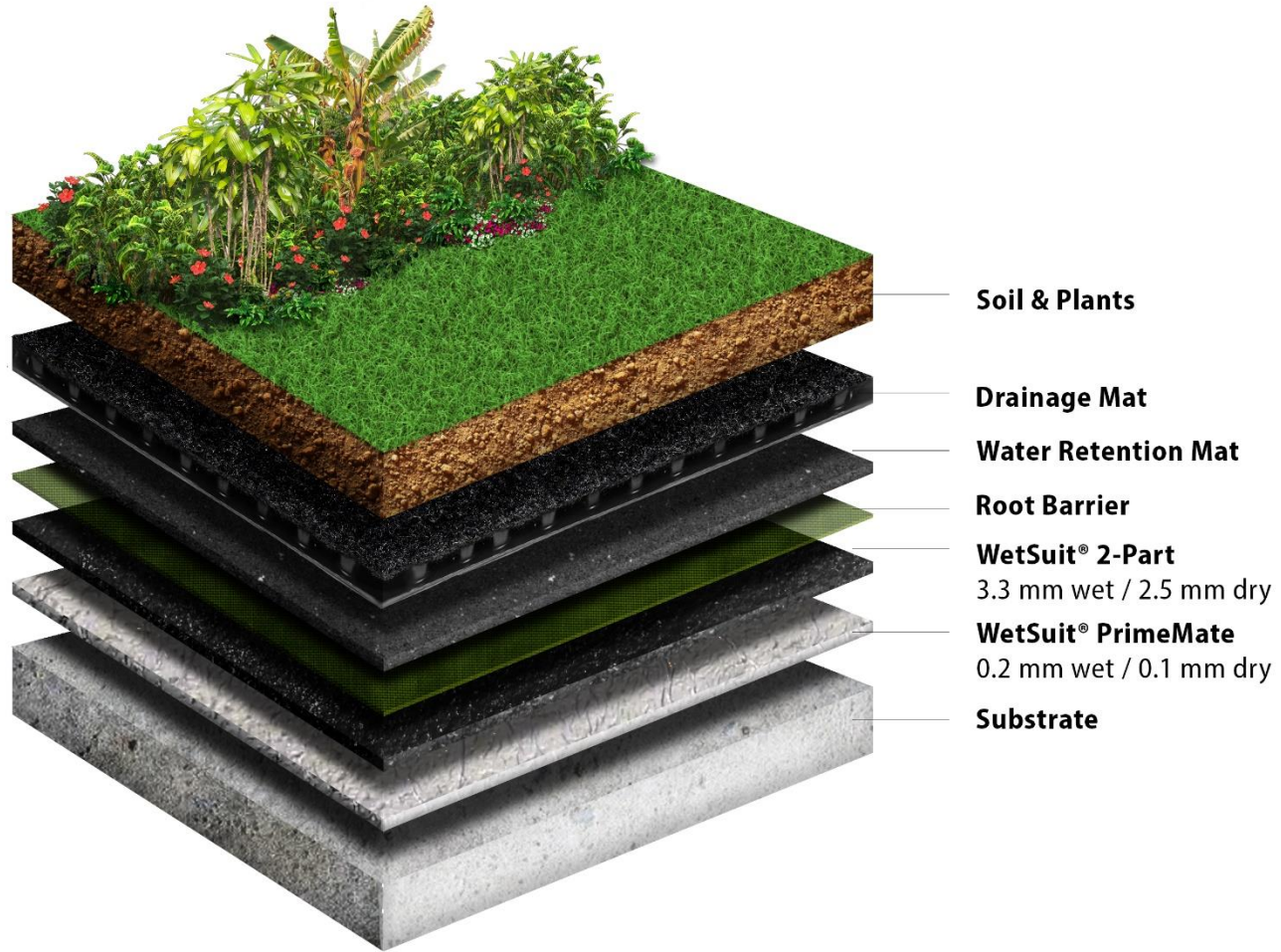
*Disruptive Waterproofing Solutions*

[www.neptunecoatings.com](http://www.neptunecoatings.com)

SP V20 0319







**Soil & Plants**

**Drainage Mat**

**Water Retention Mat**

**Root Barrier**

**WetSuit® 2-Part**  
3.3 mm wet / 2.5 mm dry

**WetSuit® PrimeMate**  
0.2 mm wet / 0.1 mm dry

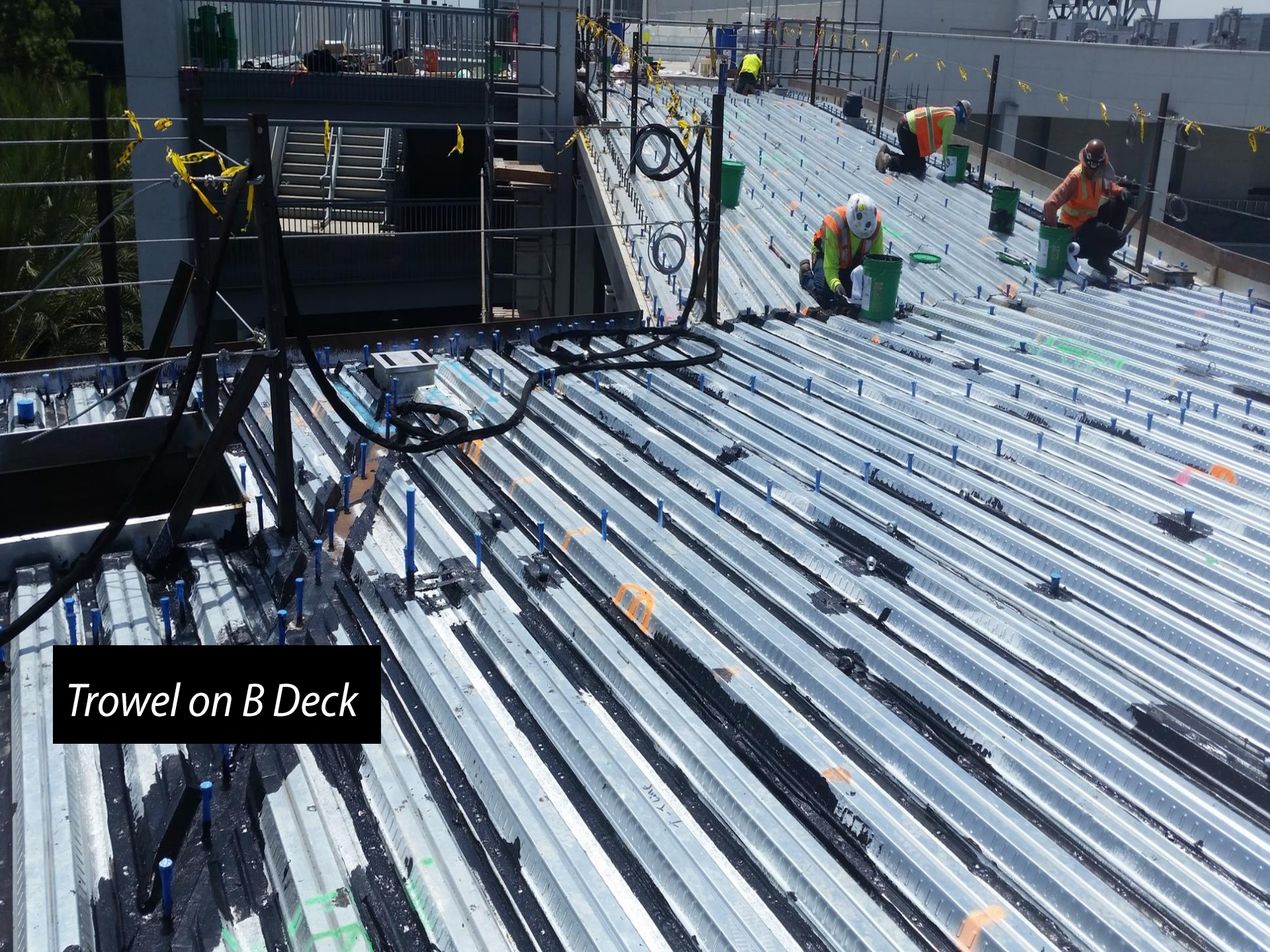
**Substrate**

# VARIETY OF APPLICATIONS

*Disruptive Waterproofing Solutions*

[www.neptunecoatings.com](http://www.neptunecoatings.com)

SP V20 0319



*Trowel on B Deck*





*2 Part Grain Silos*



*Swimming Pool*

*Walkable Deck System*





1 Part Shower Pan

*B Deck*





*Moisture Cure Chemical  
& Abrasion Resistant  
Flexible PU over WetSuit*





*Pitched Plywood*



100 MIL  
WETSUIT 2-PART  
OVER DRAINAGE  
MATT



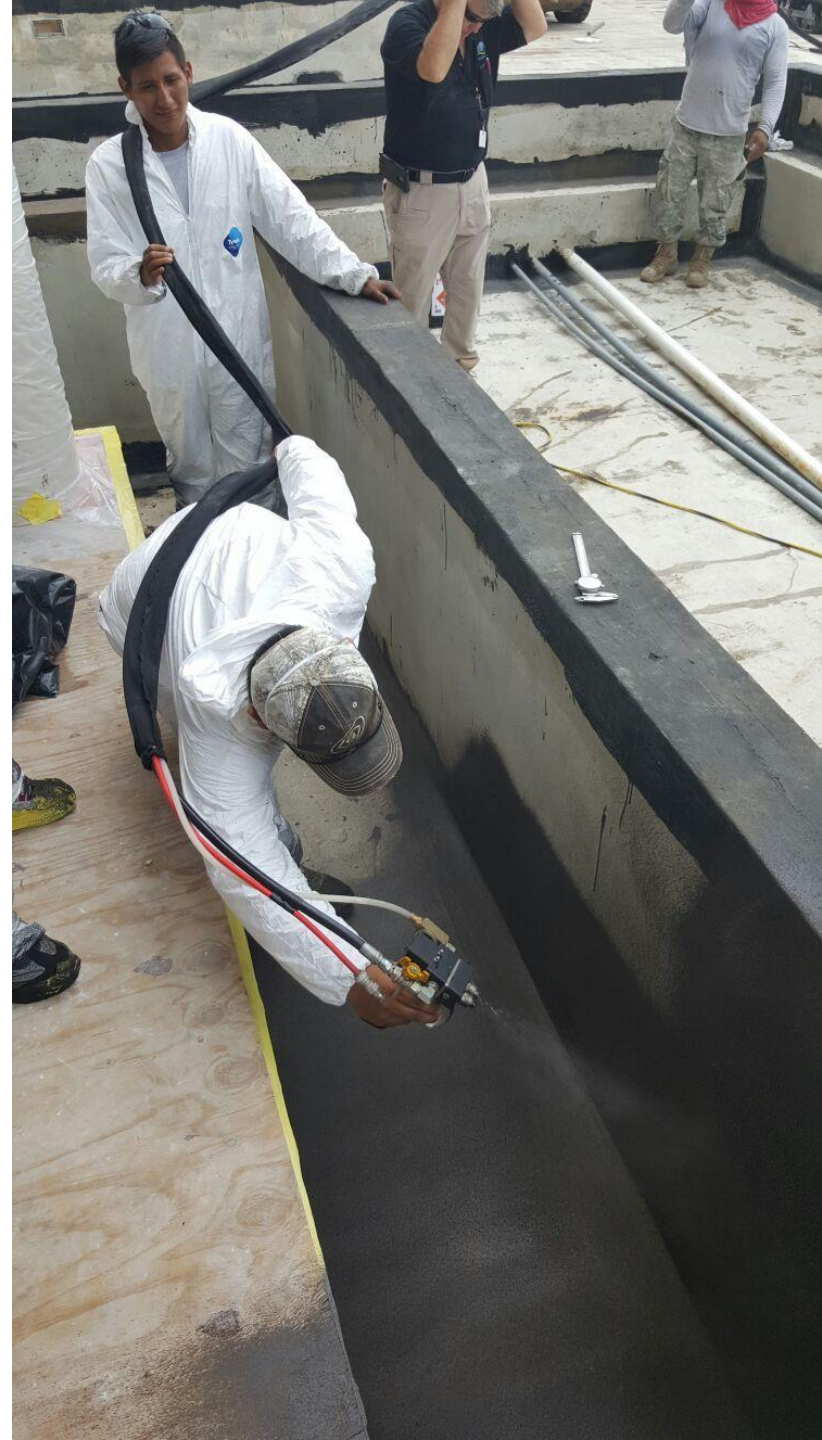
*Blindside Waterproofing*



*Reflex HPW*



*Planters*





*Corrugated Metal 1 Part*



*Industrial Roof*



*Elevator Pit*

A two-story wooden cabin with a curved roof and a smaller structure to the right. The main cabin has a dark, curved roof with a green tarp on top. It has a central double door and two diamond-shaped windows. The smaller structure to the right has a grey tarp roof and is partially covered in plastic. The cabin is surrounded by tall trees and green grass.

*Curved Roof*



*Underslab Below-Grade Waterproofing*

*WetSuit 1-Part  
Beams Anti Corrosion*







*Concrete Deck*

A row of white, rectangular ducts is installed on a construction site. The ducts are arranged in a line, receding into the distance. They are mounted on a concrete base. In the background, there is a complex metal structure, likely a crane or scaffolding, with blue tarps draped over parts of it. The scene is brightly lit, suggesting a sunny day. The ground is a mix of concrete and dirt, with shadows cast by the ducts and the structure in the background.

*CIC Ducts*






# Thank You

**"We succeed only when you do".**

*-Neptune Coatings Team*

**Member of the Harco Group**  
4260 Wagon Trail Avenue  
Las Vegas, NV 89118 USA

 **O:** +1 702 410-5500  
 **F:** +1 702 410-5889  
 [info@neptunecoatings.com](mailto:info@neptunecoatings.com)

[www.neptunecoatings.com](http://www.neptunecoatings.com)

SP V20 0319